

QUICK SOLUTION GUIDE

WOMAN WOKE UP WITH LEFT LIMB
IMPAIRMENT



SCENARIO

#922

NAME

MARY CARTER

SPECIALTY

Neurology

DIFFICULTY LEVEL

INTERMEDIATE

SIMULATION ENVIRONMENT

INTRA HOSPITAL - EMERGENCY ROOM

BODY INTERACT™
VIRTUAL PATIENTS

This patient is not a real patient, and the clinical scenario, while clinically plausible, is fictional.

Dialogues

Ask the following questions to the patient:

Greeting and Introduction

- Could you please tell me your name?

History Taking

Chief Complaint

- How are you feeling?
- Can you tell me what happened?
- Can you tell me your date of birth?
- Do you know what month it is?

History of Present Illness

- Do you know where you are right now?
- How long has it been since the symptoms started?
- Can you please repeat: MAMA, TIP-TOP, FIFTY-FIFTY, THANKS, HUCKLEBERRY, BASEBALL PLAYER.

Past Medical/Surgical History

- Do you have any health issues?

Medications and Allergies

- Are you currently taking any medication?

Physical examination

Perform the following physical examinations:

Breathing

- O2 Sat (%)
- Respiratory rate (/min)

Circulation

- Blood pressure (mmHg)
- Heart rate (bpm)

Disability

- Blood glucose (mg/dL)
- Double simultaneous stimulation

- Extraocular movements
- Facial motor assessment
- Finger-nose-finger test
- Language assessment
- Left ankle strength
- Left hip strength
- Left knee strength
- Light touch sensitivity
- Mingazzini manoeuvre
- Pain and temperature sensitivity
- Pronator drift
- Response to simple verbal commands
- Right ankle strength
- Right hip strength
- Right knee strength
- Visual fields

Exposure

- Temperature (°C)

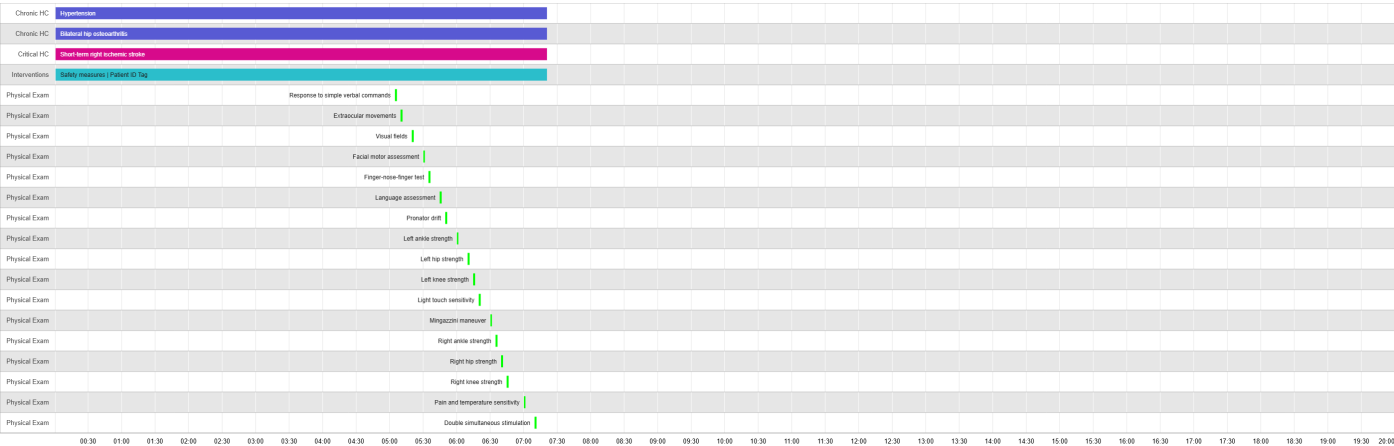
Baseline

Visualize the baseline approach. The baseline predicts scenario behavior assuming no actions by the trainee, which usually represents the worst-case scenario.



Optimal approach

Visualize the optimal approach to end your simulation successfully.



Assessment question(s) after simulation

Questions presented to the trainee in order to have a more detailed evaluation of the use of the clinical scenario.

Summative Multiple Choice Question:

Question	What is the NIHSS Score?
Correct answer	10
3 Incorrect answer(s)	11
	16
	15

Handoff question

Question presented to the trainee to assess their ability to effectively communicate patient information during a transition of care. This question is optional.

Question	Summarize this Body Interact scenario using a structured handoff pattern.
Review handoff pattern	SBAR (Situation, Background, Assessment, Recommendation): Includes current condition and reason for handoff, relevant history and context, assessment details, and recommended actions. SOAP (Subjective, Objective, Assessment, Plan): Covers patient-reported symptoms and history, measurable data and findings, clinical impressions and diagnoses, and the treatment plan.

I-PASS (Illness Severity, Patient Summary, Action List, Situation Awareness and Contingency Planning, Synthesis by Receiver): Encompasses illness status, patient background, tasks and actions, potential changes and plans, and confirmation of understanding.

AT-MIST (Age, Time of incident or onset of symptoms, Mechanism of injury/Medical Complaint, Injuries or Inspections head-to-toe, vital Signs, and Treatments): Describes the cause of injury or medical complaint, findings from head-to-toe inspection, vital signs, and treatments provided.